

Merchant Info

Merchant _____

Address _____

City, State, ZIP _____

Merchant ID _____

System Info

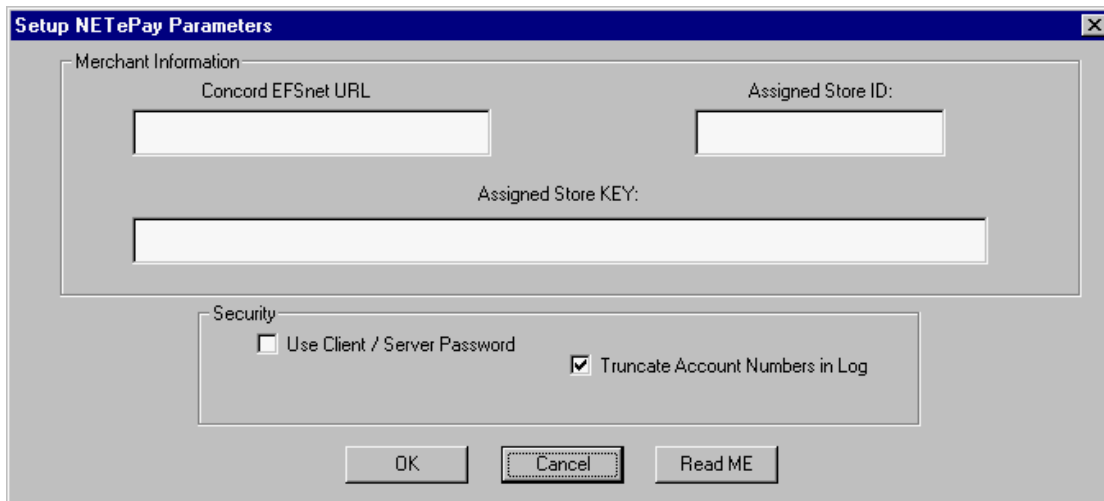
Merchant Contact
Name & Phone _____

Card Processor
Name & Phone _____

Dealer Contact
Name & Phone _____

POS Package _____

From the *NETePay* menu bar, select **Setup** and choose **Merchant Parameters**



Merchant Information (Provided by Concord)

| | |
|--------------------|--------------------------------------------------------------------------------------------------------------------------------------------------------------------------------------------------------------------|
| Concord EFSnet URL | Alphanumeric; the address of the Concord EFS host on the internet. |
| Assigned Store ID | Alphanumeric; the store ID assigned by Concord |
| Assigned Store KEY | Alphanumeric; the store key assigned by Concord. This data is usually quite long and it is recommended that you copy and paste this key data from the Concord email with your account information to avoid errors. |

NETePay Information

| | |
|---------------------------------|------------------------------------------------------------------------------------------------------------------------------------------------------------------------------------------------------------------------------------------------------------------|
| Use Client Server Password | Check this box if password be used with DSIClientX; If enabled, Password must be entered in text box. NOTE: You must also configure DSIClientX and ePay Administrator for Client/Server password protection using the same password to use this function. |
| Truncate Sensitive Data in Logs | Check this box to truncate account number and expiration date info in log files. This function may need to be enabled for VISA CISP compliance. |

Refer to the *NETePay Guide for Concord EFS* manual (on the NETePay CD in PDF format) for complete information on setup and configuration.